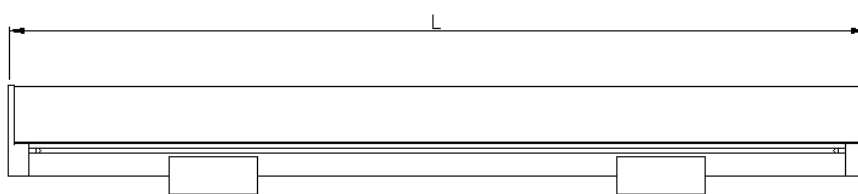
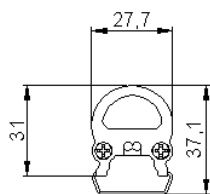
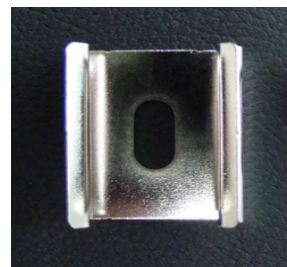
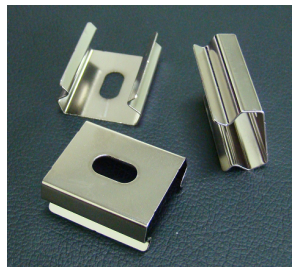


25mm LED bar



The Technical Specifications of LED bar (LH-LB25-10X)

*. X=Color

Descriptions	Specifications	Remarks
1. Driving Current	0.6A	
2. Power Consumption	14.4 W	
3. Operating Voltage	18 ~ 25 VDC	
4. Recommended Voltage	24 VDC	
5. LED Quantity	50 SMDs	
6. LED Chip	5.4mm(W)x5.0mm(D)x1.5mm(H)	
7. Operating Temperature	-20°C ~ +70°C	
8. Viewing Angle	120 degree	
9. Power input line length	500mm	
10. Outline Size	1000mm x 27.5mm x 31m	35mm(Insert bracket height)
11. Weight	About 500 g	
12. Available length	500mm, 1000mm, 1500mm, 2000mm, 2500mm, 3000mm	
13. Available color	White,Red,Green,Blue, RGB,panorama,dmx512	